

SPECIFICATIONS

MODEL NUMBER	EB-760W	EB-760Wi	EB-770F	EB-770Fi	
SKU Number	V11HA81080	V11HA80080	V11HA79080	V11HA78080	
Projection Technology	RGB liquid crystal shutter projection system				
Specifications of Main Parts					
LCD	Size	0.59" (C2Fine)		0.62" (C2Fine)	
	Resolution	WXGA (1280 x 800)		Full HD (1080p)	
	Projection Lens	Type	No Optical Zoom / Focus (Manual)		
		F-Number	1.60		
	Focal Length	3.7mm			
	Throw Ratio	1.0 – 1.35 (Digital Zoom)		0.25 – 0.35	
Light Source	Type	Laser Diode			
	Life (Normal / Quiet / Extended)	20,000 / 20,000 / 30,000 hrs			
Screen Size (Projected Distance)	Standard: 74.3" screen @ 43.3cm Zoom (Wide): 53" to 132" screen (33.7 – 92.8cm) 4:3 58" to 146" screen (33.7 – 92.8cm) 16:9 60" to 150" screen (33.7 – 92.8cm) 16:10		Standard: 77" screen @ 43.3cm Zoom (Wide): 49" to 123" screen (32.5 – 89.3cm) 4:3 56" to 140" screen (32.5 – 89.3cm) 16:9 60" to 150" screen (32.5 – 89.3cm) 16:9 55" to 139" screen (32.5 – 89.3cm) 16:10 57" to 142" screen (39.4 – 85.3cm) 21:9		
Brightness¹	White Light Output (Normal / Eco) 4,100lm / 2,800lm Colour Light Output 4,100lm				
Contrast Ratio	Over 2,500,000 : 1				
Internal Speaker(s)	Sound Output 16W Monoaural				
Geometric Correction	Vertical / Horizontal Keystone ±3° / ±3° Quick Corner Yes (Manual) Yes (Auto and Manual) Yes (Manual) Yes (Auto and Manual)				
Image	Noise Reduction Yes Super-Resolution Yes Detail Enhancement Yes				
Connectivity	Analog Input D-Sub 15Pin 2 Composite RCA x 1 (Yellow) Digital Input HDMI 3 (HDCP 2.3) Analog Output D-Sub 15Pin 1 (Black) (in common with Computer 2) Audio Input Stereo Mini Jack 3 Audio Output Stereo Mini Jack 1 Others USB Type A 2 (1 Port (Side): PC Free, FW Update, Copy OSD Settings; 1 Port (Rear): PC Free, FW Update, Copy OSD Settings or 5V/2A Power Supply USB Type B 1 (For FW Update, Copy OSD Settings, USB Display) 2 (For FW Update, Copy OSD Settings, USB Display) 2 (For FW Update, Copy OSD Settings, USB Display) Mic I/O Stereo Mini x 1 Interactive Sync N/A Stereo Mini x1 N/A Stereo Mini x1 Finger Touch Unit Control N/A Mini Din 8pin x 1 N/A Mini Din 8pin x 1 Control I/O RS-232C D-Sub 9pin x 1 Network Wired LAN RJ45 x 1 (100Mbps) Wireless Built-in and Optional (using ELPAP11)				
Wireless Specification	(Wireless LAN and Screen Mirroring) Supported Speed For Each Mode Infrastructure: IEEE 802.11b (2.4GHz): 11Mbps ² , IEEE 802.11g (2.4GHz): 54Mbps ² , IEEE 802.11n (2.4GHz): 72.2Mbps ² , IEEE 802.11a (5GHz): 54Mbps ² , IEEE 802.11n (5GHz): 150Mbps ² , IEEE 802.11ac (5GHz): 325Mbps ² Access Point (Wi-Fi Direct): IEEE 802.11g (2.4GHz): 54Mbps ² , IEEE 802.11n (2.4GHz): 72.2Mbps ² , IEEE 802.11a (5GHz): 54Mbps ² , IEEE 802.11n (5GHz): 150Mbps ² , IEEE 802.11ac (5GHz): 325Mbps ² Supported Mode Infrastructure, Access Point (Wi-Fi Direct) Wireless LAN Security Infrastructure: OPEN, WPA2 / WPA3-PSK, WPA2 / WPA3-EAP Supported EAP Type: PEAP, PEAP-TLS, EAP-TLS, EAP-FAST ; Access Point (Wi-Fi Direct): WPA2-PSK (AES)				
(Optional Wireless LAN)	Supported Speed For Each Mode Access Point (Wi-Fi Direct): IEEE 802.11g (2.4GHz): 54Mbps ² , IEEE 802.11n (2.4GHz): 72.2Mbps ² , IEEE 802.11a (5GHz): 54Mbps ² , IEEE 802.11n (5GHz): 150Mbps ² , IEEE 802.11ac (5GHz): 325Mbps ² Access Point (Wi-Fi Direct) Wireless LAN Security WPA2-PSK (AES)				
Operating Temperature³	Single Use 0 - 2,286 m (0 - 7,500 ft); 0 °C - 40 °C [32 °F - 104 °F] ; 20% to 80% Humidity, No Condensation Over 2,286 m (7,500 ft); 0 - 35 °C [32 °F - 95 °F] ; 20%-80% Humidity, No Condensation				
Operating Altitude	Over 1,500 m / 4,921 ft, with High Altitude Mode: 0 - 3,048 m (0 - 10,000 ft)				
Direct Power On / Off	Yes				
Start-Up Period	Less than 10 seconds, Warm-up Period: 30 seconds				
Quick Start-Up	Less than 5 seconds (Display)				
Cool Down Period	Instant Off				
Air Filter	Type	Electrostatic Filter			
	Maintenance Cycle ⁴	20,000 hours			
Power Supply Voltage	100 – 240 V AC ±10%, 50/60 Hz				
Power Consumption (220 - 240V)	Lamp On (Normal / Extended) 263W / 199W Standby (Network On / Off) 2.0W / 0.5W				
Dimension Excluding Feet (D x W x H)	395 x 356 x 133 mm				
Weight (with cable cover)	Approx. 5.9kg		Approx. 6.0kg		
Fan Noise (Normal / Eco)	37dB / 27dB				

¹ Colour brightness (colour light output) and white brightness (white light output) will vary depending on usage conditions. Colour light output measured in accordance with IDMS 15:4; white light output measured in accordance with ISO 21118.
² Maximum speed and range is achievable when used with same enhanced mode technology. Actual data rates, features and performance may vary depending on your computer system, the environment and other factors.
³ When environmental temperature becomes high, the brightness becomes dark automatically.
⁴ When used in the general office environment (the amount of floating dust: 0.04 - 0.2 mg/m³). Based on the Epson's in-house test results.

Supplied Accessories

Power Cable: 4.5m, 3 wire (Black) x 1
Remote Control with 2xAA Battery
Projector Foot
User Guide

Only for EB-770Fi and EB-760Wi:
USB Cable (USB Type A to Type B): 5m
Easy Interactive Pen: 2 (ELPPN05A and ELPPN05B) with 2xAA Battery
Soft Pen Tip (Felt): 4
Hard Pen Tip (Teflon): 2
Pen Stand Set
Corner Markers for Auto Screen Adjustment
Magnet for Corner Markers

Optional Accessories

Air Filter:ELPAF60
Wireless LAN unit: ELPAP11
Setting Plate: ELPMB62
Table Mount: ELPMB29
Wireless Presentation System: ELPWP10
Document Camera: ELPDC07, ELPDC13, ELPDC21

Only EB-770Fi and EB-760Wi:
Wall Mount for FTU: ELPMB63
Finger Touch Unit: ELPFT01

EB-760W/EB-770F



EB-760Wi/EB-770Fi



©2023 Epson Singapore Pte Ltd. All Rights Reserved. Reproduction in part or in whole, without the written permission from Epson, is strictly prohibited.

EPSON is a registered trademark of Seiko Epson Corporation.

All other product names and other company names used herein are for identification purposes only and are the trademarks or registered trademarks of their respective owners.

Epson disclaims any and all rights in those marks. Projected images shown herein are simulations. The actual product design and contents may vary. Specifications are subject to change without notice and may vary between countries. Please check with local Epson offices for more information.

Apple, iPad and iPhone are trademarks of Apple Inc., registered in the U.S. and other countries. App Store is a service mark of Apple Inc.

Android is a trademark of Google Inc.

Dealer's Stamp

Information correct at time of printing. Printed May 2023

ULTRA-SHORT THROW LASER PROJECTORS EB-760W/760Wi/770F/770Fi

EPSON

ELEVATE LEARNING AND MEETINGS WITH DYNAMIC DISPLAY.

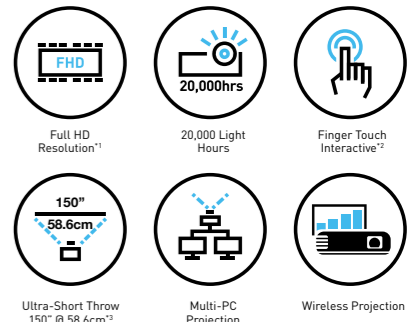


21:9 Aspect Ratio Screen



Experience next-level collaboration in Full-HD with Epson's Ultra-Short Throw projectors.

Leap into the world of interactive learning and presenting with Epson's all-new EB-760/770 series projectors! Designed to provide an immersive experience while maximising available space, these projectors display stunningly vibrant and clear visuals even in well-lit environments. Epson EB-760/770 series projectors are the perfect addition to any educational institution or business looking to create a collaborative and engaging learning or working environment.



Stunning Visuals

Delivering clear and vivid images at 4,100 lumens with 3LCD laser light source technology.

Ease of Connectivity

No more messy cables and easily connect from different smart devices using the built-in wireless connection.

Trusted Reliability

Delivering up to 20,000 hours* of maintenance-free laser light source, present and impress with confidence.

*1 For EB-770F and EB-770Fi. *2 For interactive models – EB-760Wi and EB-770Fi only. *3 EB-770Fi/770F: 150" @ 58.6cm [wall to front of projector] ; EB-760Wi/760W: 150" @ 62.1cm [wall to front of projector].
*Approximate time until brightness decreases 50% from first usage. Measured by acceleration test assuming use of 0.04 - 0.20 mg/m³ of particulate matter. Time varies depending on usage conditions and environments.

Find out more at www.epson.com.sg/projectors



Epson Singapore Pte Ltd 438B Alexandra Road, Block B Alexandra Technopark, #04-01/04, Singapore 119968. Tel: (65) 6586-5500
Epson Customer Care Center 100G Pasir Panjang Road, #01-09 Interlocal Centre, Singapore 118523. Epson Helpdesk: 800 120 5564. Please refer to www.epson.com.sg/contact for opening hours.

Collaborate and Engage Brilliantly

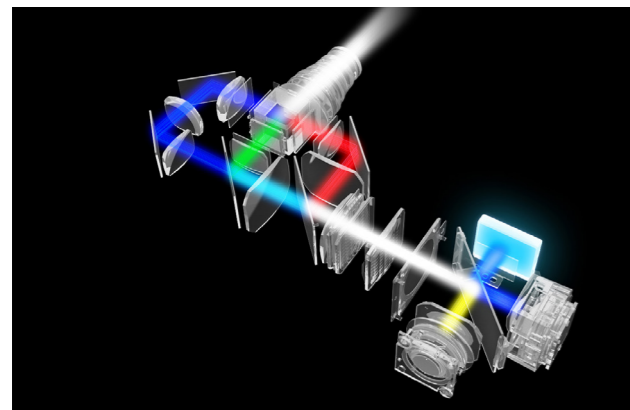
With Ultra-Short Throw Laser Projector

Revolutionising the way you collaborate in schools and businesses, Epson's energy-efficient ultra-short throw business laser projectors deliver impressive visuals without the need for bulky and expensive flat panel displays. Equipped with a low-maintenance laser light source, our reliable projectors facilitate collaborations and improve engagement.



Improved Design

By utilising Epson's original fixed phosphor unit and an optimised design, the projector produces brighter and sharper images while being more compact. Additionally, the new heatsink design enhances heat conductivity and resistance, resulting in improved performance and high-quality, vivid images.

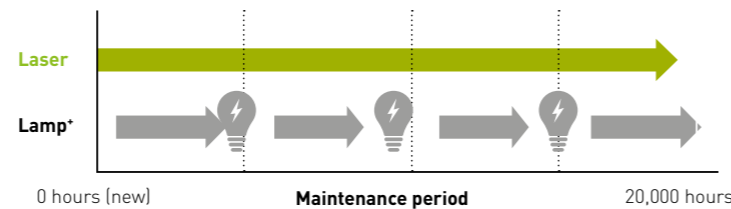


20,000 Maintenance-Free Hours

Epson's unique laser technology allows for 20,000 hours* of maintenance-free laser light source in the projector. Users can enjoy peace of mind and highly reliable performance, thanks to the innovative fixed phosphor unit, providing long-lasting durability to the device.



Maintenance period of laser and lamp



*No required maintenance for the light source for up to 20,000 hours. Approximate time until brightness decreases 50% from first usage. Measured by acceleration test assuming use of 0.04 - 0.20 mg/m³ of particulate matter. Time varies depending on usage conditions and environment. Replacement of parts other than the light source may be required in a shorter period.

See More, Do More



Providing a more immersive and engaging viewing experience, Epson's ultra-short throw projectors boast a maximum screen size of 150 inches[^] diagonally, easily interchangeable depending on your presentation needs. The 21:9 ratio is newly available for the FHD models*.

*The 21:9 aspect ratio is commonly used for video conferencing in hybrid workspaces, applicable to the EB-770F and EB-770Fi FHD models.
*If used with interactive function. EB-770Fi: Up to 110" for 16:6 and 21:9 and up to 100" for 16:9; EB-760Wi: Up to 100" for 16:10.



Vibrant Image Quality

Detailed and sharp visuals are projected clearly, visible even in well-lit environments and from a distance.



Large, All-Angle Display

Project up to 150 inches of large screen content, without any viewing angle limitations.

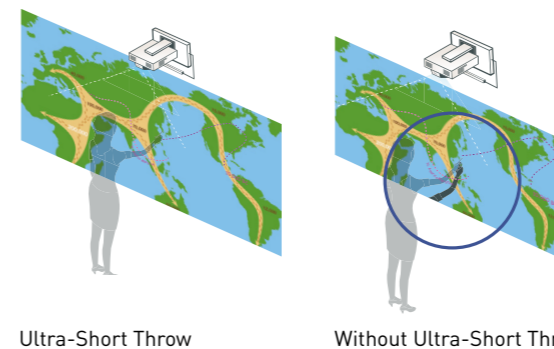


High Contrast Ratio

Digital signage benefits from the astounding over 2,500,000:1 contrast ratio, which improves visibility and enhances contrast in scenes that may be too bright or dark.

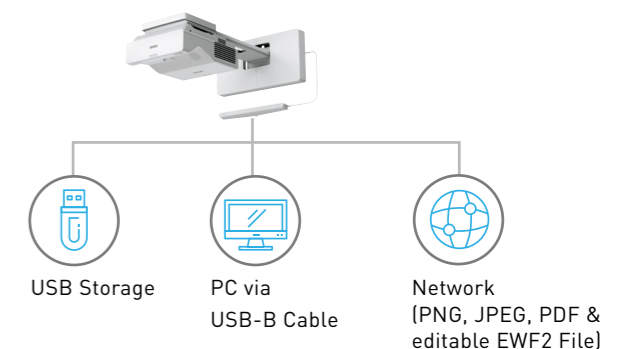
Ultra-Short Throw Advantage

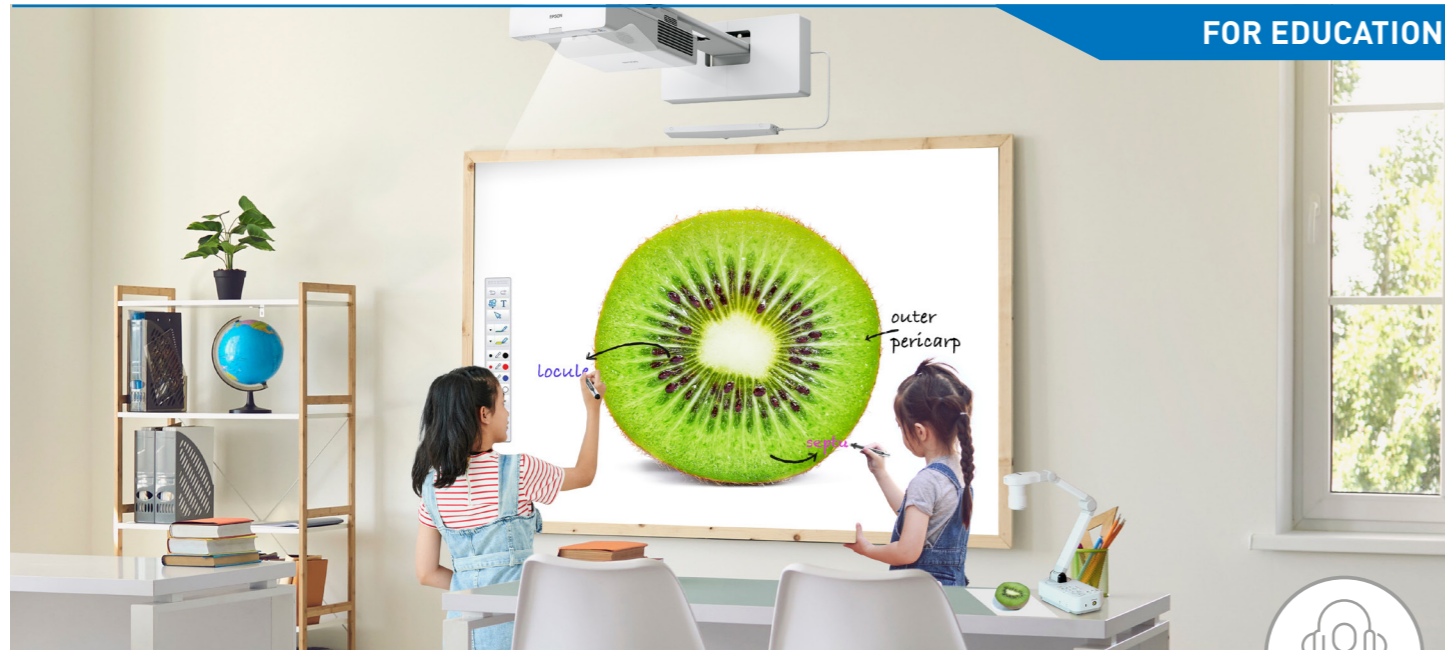
Less shadow is formed on screen as light is not blocked by presenter, allowing your audience to see the clear and detailed projections at all times.



Advanced Whiteboard Function For interactive models

Save whiteboard images in PNG, JPEG, PDF, and editable EWF2 files directly into a USB storage, a PC via USB-B cable or via the network.



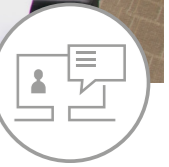


Game-changer for Educational Spaces

Learning beyond classrooms, inspiring students and teachers

Enhancing learning experiences, experience immersive learning and discover adventures beyond the walls of the classroom with Epson's EB-760/770 series. Transform any surfaces into big, interactive* whiteboards that teachers and students can easily interact with. Supporting display toolbars, teachers can now present engaging content in classes with ease.

*Only for interactive models.



Powerful Tool for Business Collaborations

Transforming workspaces into dynamic, engaging environments

Providing a cutting-edge visual experience that helps businesses to thrive, the all-new Epson EB-760/770 series transforms meeting rooms into an interactive and engaging environment where teams can work together seamlessly. Present to colleagues and clients with confidence, clearly, accurately, and effectively.



Multi-PC Projection

The Epson iProjection software allows teachers to display the work of up to four students on the screen for discussion. Additionally, up to 50 students can be connected to the connection list at once.



Dual side Toolbar

For interactive models

Convenient operation and touch control features enhance the interactivity of the screen, allowing teachers to interact with students on both sides with ease.



Support Document Camera

Teachers can use the Epson document camera to display 3D objects, textbooks, and microscope specimens on a large screen for a more immersive learning experience.

Support Document camera: EPLDC07/13/21.



Auto Source Search

The auto source search function detects the connected device and switches to the display automatically, eliminating the need to fiddle with the remote when starting a meeting.



Digital Whiteboard Capability

For interactive models

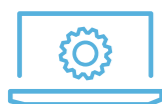
Save space by using the digital whiteboard function without the need to have a physical whiteboard in the meeting rooms. The notes can even be share out via email for up to 20 pages.



Wireless Integration

Ease of connection with built-in wireless connectivity through Wi-Fi and screen mirroring support.

Download and Project



Project Documents, Photos Wirelessly

Enjoy wireless projection via the Epson iProjection app with your PC (Windows, Mac or Chromebook) or mobile devices. This powerful app allows you to share, manage, and annotate on displayed content from an easy-to-use, intuitive menu.



Epson iProjection

Plug-in and Project



Quick and Easy Connection

The optional ELPWP10* wireless presentation kit provides a quick way to connect wirelessly without installing iProjection software. Simply plug in the dongle and tap the connect button to share your content immediately.

*ELPWP10 is sold separately.



Unveil The True Colours

EPSON 3LCD PROJECTORS



True BRIGHTNESS

True COMFORT

True REALISM

Up to 3x
Brighter Colours



☀️
WHITE 3000 LUMENS

🌈
COLOUR 3000 LUMENS

No Rainbow
Effect

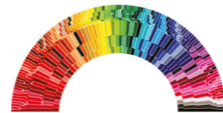


LIGHT SOURCE



PRISM

3x Wider
Colour Gamut



WIDER COLOUR RANGE

EPSON 3LCD PROJECTORS

1 - CHIP PROJECTORS



☀️
WHITE 3000 LUMENS

🌈
COLOUR 430 LUMENS**



LIGHT SOURCE



ROTATING COLOUR WHEEL



SMALLER COLOUR RANGE

1-CHIP PROJECTORS



Efforts to mitigate environmental impacts in manufacturing



Toyoshina plant in Japan

Epson becomes the Manufacturing Industry's First¹ to Switch to 100% Renewable Electricity at all sites² in Japan.

In November 2021, we achieved 100% renewable electricity at all domestic sites², Shinshu Green Electricity, CO₂-free value-added electric power produced locally in Nagano Prefecture using Nagano Prefecture hydroelectric power. This is both reducing Epson's GHG emissions³ and increasing consumption of locally produced energy.

Assembled⁴ using 100% renewable electricity

Epson announced that its worldwide group sites² will all meet their electricity needs from 100% renewable energy sources (renewable electricity) by 2023. We have achieved 100% renewable energy at our projector's manufacturing site in the Philippines by generating power with a rooftop mega-solar power plant and by switching to a mix of geothermal and hydroelectric power in January 2021.



Epson Precision (Philippines), Inc.



Over 80% recycled cardboard packaging

All carton box packaging of Epson's projectors are made by over 80% recycled cardboard.



Scan here to find out more



1 Among Japanese companies that have joined the RE100. Per Epson research as of October 27, 2021.
2 Excludes leased properties of some sales sites, etc.
3 GHG (Greenhouse Gas), GHG scope 1, 2, 3 emission
4 Products assembled in the Philippines.